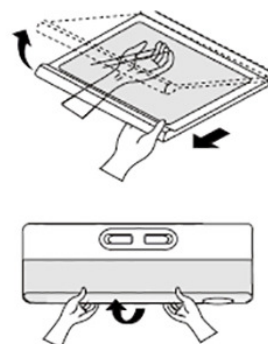


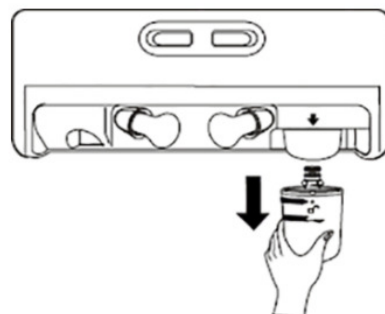
1 Remove top shelf.

Turn **OFF** the water supply to the refrigerator. Take out the top shelf and remove the lamp cover by pressing the tab under the cover and pulling out toward the front.



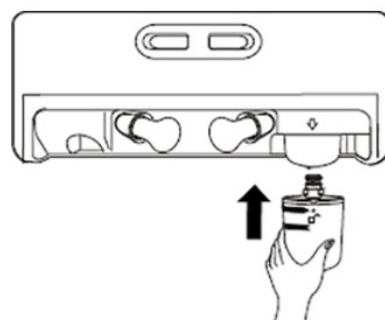
2 Remove old filter.

Remove the old filter by slowly turning it to the left a quarter turn until the unlocked symbol is lined up with the indicator line in the control box area and pulling it down.



3 Install new filter.

Take the new filter out of its packaging and remove the protective cap that covers the o-rings. Line up the ears so that it can be inserted into the filter head. Twist the cartridge one quarter turn to the right to lock it into place. You will feel a stop and the lock symbol should now be lined up with the indicator line.



4 Flush with water.

Turn the water supply back **ON**. Replace the lamp cover and top shelf. Flush 1.5 gallons through filter (flush approximately 3 minutes) before use. Once the filter has been replaced open the refrigerator door a few moments later and check the shelf area for any leaks.