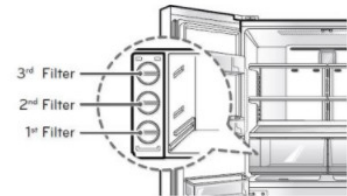
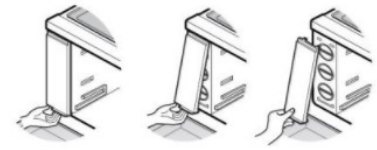


# 1 Remove filter cover.

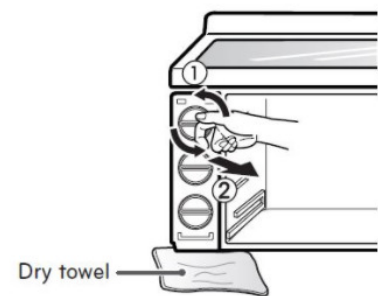
Disassemble the filter cover. The filter is mounted on the left side of the **fresh zone** in the refrigerator.

- Remove the left side **fresh zone** drawer.
- Push, then pull out the bottom side of the filter cover to remove it.



# 2 Remove old filter.

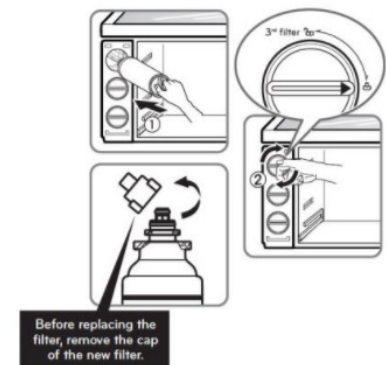
Turn the handle on the filter you wish to replace to the left by 90 degrees. Pull forward on the handle to remove the filter.



**NOTE:** Some water may come out of the filter during removal. Before removing the filter, place a towel in front of the case to catch the water.

# 3 Install new filter.

Remove the cap from the new filter. Hold the filter handle vertically and insert the filter. Insert the filter completely and turn the handle to the right 90 degrees.



# 4 Remove trapped air.

After installing or replacing the filter, dispense 2.5 gallons each of water and cold water to remove the air and activated carbon before use.